

4. Information exchange

Porsche Design Driver's Selection

New MARTINI RACING Collection: Memories of a legend

It was the fastest race in the long history of the 24 Hours of Le Mans. The Martini Porsche 917 with the number 22, driven by Helmut Marko and Gijs van Lennep, won the long-distance classic with the unbelievable average speed of over 222 km/h (138 mph).

This triumph thirtyfive years ago was the first milestone in the joint success story of Porsche and MARTINI RACING. Over the years, many more victories

were added, and not only at Le Mans. Martini Porsche embodied uncompromising sportsmanship and became a synonym for success in motor sports.

The legend of this partnership lives on in the exclusive MARTINI RACING Collection from Porsche Design Driver's Selection.



In the Running

The Porsche Sweat Jacket with intricate printing and applications of 100% cotton has two pockets on the front. A lady's version is also available in red.



Right on Time

The sporty Chronograph with a stop-watch function of up to twelve hours is delivered in a gift box with a 911 Carrera RSR model car, scale 1:43.



Well Protected

The intricately worked Porsche Cap with MARTINI RACING design is 100% cotton and bears the Porsche signet.



Well on the Way

Fashionable travel bag with a canvas look and the Martini Porsche print. Organizer with zippered pocket inside.



These products are available at your local Porsche Center and – except for the watch – at www.porsche.com.

Porsche Tequipment

The sport's show

And here are the sports news from Porsche Tequipment: just in time for the open-air season, the new Sport-Design Package for Boxster and Boxster S has been further enhanced to meet the requirements of Roadster customers. The results speak for themselves: the classic Boxster line has been retained and the aerodynamics have been honed, leading to reduced lift with no change drag coefficient. This design will continue to support the vehicle balance specific to the Roadster.



The spoiler lips on nose section lowers the Boxster optically and make it appear even more dynamic. The automatic-extending rear spoiler is based on the split wing principle featured in the Porsche 911 Turbo. The rear panels were designed using diffuser optics based on the Carrera GT.



Together with the stainless steel tailpipe, the new rear view highlights the powerful dynamics of the Boxster and Boxster S.



SportDesign Package

For vehicles without Park Assistant Part number: 987 044 802 00

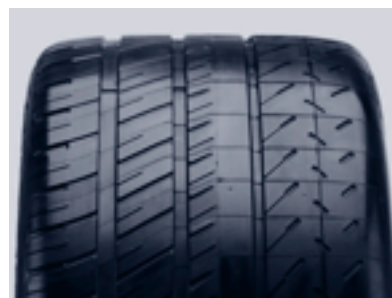
For vehicles with Park Assistant Part number: 987 044 802 06

Also available from Porsche Tequipment are the new sport complete wheel sets (19-inch Carrera Sport wheel and 19-inch Turbo wheel) with the Michelin Pilot Sport Cup tyre.



The tyres were designed for use on the racetrack and were developed specifically for the models in the 911 series (model 997) and have undergone extensive tests. This tyre has excellent gripping qualities, a high-class driving performance and steering behaviour and this leads to consistently shorter lap

times. It can even be controlled easily on a damp course. Typical of racing tyres: the low profile height increases the danger of aquaplaning during wet weather.



19-inch Carrera sport complete wheel set with Michelin Pilot Sport Cup

For 911 Carrera models (type 997)

For vehicles with/without tire pressure control Part number: 997 044 602 17/18

For 911 Turbo (Type 997)

Part number: 997 044 602 18

19-inch Turbo sport complete wheel set with Michelin Pilot Sport Cup

For 911 Carrera/S Models (Type 997)

For vehicles with/without tire pressure control Part number: 997 044 602 24/25

For 911 Carrera 4/4S Models (Type 997)

For vehicles with/without tire pressure control Part number: 997 044 602 22/23

For 911 Turbo (Type 997)

Part number: 997 044 602 21

For more information on the complete Porsche Tequipment product programme contact your Porsche partner or visit www.porsche.com.



The Michelin Pilot Sport Cup The racing tyre for the road.

Whether for the racetrack or for everyday use – the Michelin Pilot Sport Cup is convincing with its outstanding grip in every situation, enabling you to master fast bends and other challenges. No wonder that the Michelin Pilot Sport Cup has been allowed to bear the Porsche N-specification. A guarantee of ultimate driving enjoyment and consistently short lap times.

www.michelin.com





The Michelin Pilot Sport Cup The sports tyre for the road



The challenge: To develop a racing tyre as the ideal compromise between the racetrack and the road.

The result: A racing tyre that is road-legal throughout the world—the Michelin Pilot Sport Cup.

It was developed and exhaustively tested specifically for the 911 series (Type 997) by Porsche engineers working in close cooperation with Michelin. Only because of this it is allowed to bear the N-specification—the sign of Porsche quality.

Driving performance

The multi-component structure of the tyre ensures an exceptionally high driving performance.

Dynamics

The outstanding grip level significantly improves dynamics on dry surfaces. Nevertheless, the tyre is also easily controllable on wet

*One set of tyres for everyday use
One set of tyres for the racetrack*

Makes one set of tyres

surfaces. The somewhat lower tread depth, typical in racing, means that in heavy rain the driver must adapt speed and driving style.

Lateral acceleration

Unlike conventional production tyres, the outside shoulder tread pattern allows higher lateral acceleration. This means that steering behavior is even more agile and precise.

In short: The driving behaviour of Michelin Pilot Sport Cup tyres is precise, stable and dynamic. And ensures consistently short lap times.

